

**County Health  
Rankings & Roadmaps**

Building a Culture of Health, County by County

# Using CHR&R to Advance Health and Equity

September 20, 2023

Sheri Johnson, PhD

*countyhealthrankings.org*



University of Wisconsin  
Population Health Institute  
UNIVERSITY OF WISCONSIN  
SCHOOL OF MEDICINE AND PUBLIC HEALTH

Support  
provided by

Robert Wood Johnson  
Foundation





# Disclosures

## County Health Rankings & Roadmaps

Building a Culture of Health, County by County

County Health Rankings & Roadmaps is a program of the University of Wisconsin Population Health Institute, with funding support from the Robert Wood Johnson Foundation.

I have no other relevant disclosures



University of Wisconsin  
Population Health Institute  
UNIVERSITY OF WISCONSIN  
SCHOOL OF MEDICINE AND PUBLIC HEALTH



# Learning outcomes for today

- Increase understanding of population level data to drive action on social determinants of health and equity
- Increase understanding of evidence informed strategies to address community priorities



# Part 1: Definitions of Health Equity

County Health  
Rankings & Roadmaps

Building a Culture of Health, County by County



University of Wisconsin  
Population Health Institute  
UNIVERSITY OF WISCONSIN  
SCHOOL OF MEDICINE AND PUBLIC HEALTH



**Achieving health equity requires:**

**1) valuing all individuals and populations equally**

**2) Recognizing and rectifying historical and contemporary injustices**

**3) Allocating resources according to need**

**What is health equity?**

**Assurance**

**of the conditions**

**for optimal health**

**for all people**

Jones, Camara P. MD, MPH, PhD. Systems of Power, Axes of Inequity: Parallels, Intersections,

Braiding the Strands. Medical Care 52():p S71-S75, October 2014. | DOI:



# SOCIAL DETERMINANTS OF HEALTH EQUITY

---

- Systems of power that determine how resources are allocated to socially defined populations
- Addressing SDoE requires
  - Monitoring for inequities in exposures and opportunities, and disparities in outcomes
  - Examination of structures, policies, practices, norms and values
  - Intervention on societal structures and attention to systems of power

# Recognizing Historical Injustice



CREDIT: MILWAUKEE COUNTY HISTORICAL SOCIETY



CREDIT COURTESY OF MILWAUKEE PUBLIC LIBRARY

Source: <https://www.wuwm.com/post/construction-milwaukees-freeways-asset-some-detrimental-others#stream/0>



# RACISM IS LIKE A CADILLAC



Source: Lipsitz, G. "Swing Low, Sweet Cadillac": White Supremacy, Antiblack Racism, and the New Historicism, *American Literary History*, Winter, 1995, Vol. 7, No. 4 (Winter, 1995), pp. 700- 725



# Part 2: Population Health Data for Action

County Health  
Rankings & Roadmaps

Building a Culture of Health, County by County

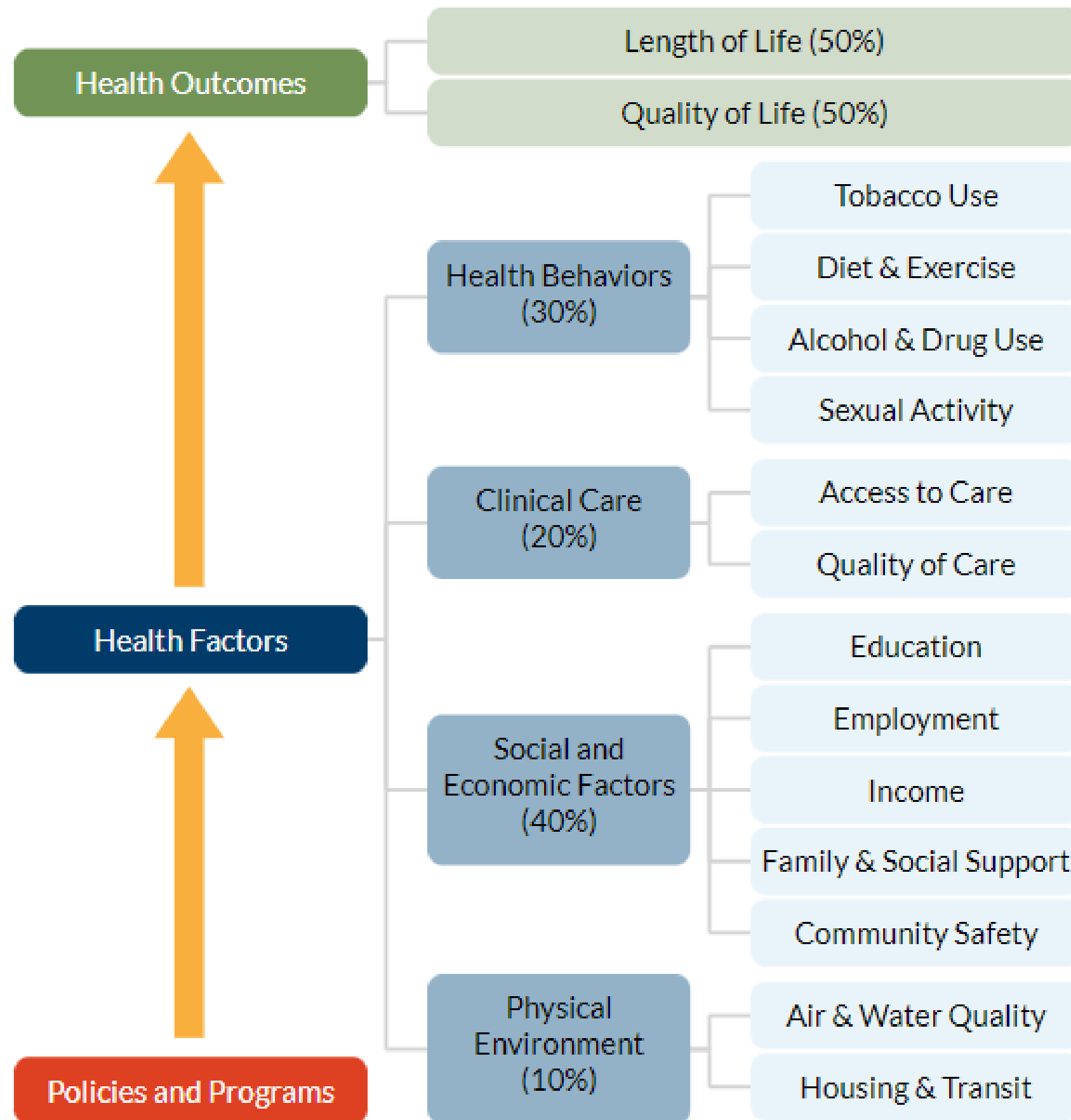


University of Wisconsin  
Population Health Institute  
UNIVERSITY OF WISCONSIN  
SCHOOL OF MEDICINE AND PUBLIC HEALTH



# County Health Rankings & Roadmaps

Building a Culture of Health, County by County





# Explore Health Rankings

The annual Rankings provide a revealing snapshot of how health is influenced by where we live, learn, work, and play. They provide a starting point for change in communities.

## Find Data by Location

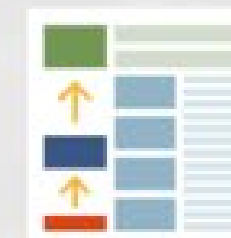
Search by county, state or ZIP code



Search

## Find Data by Topic

Explore measures within our model of health



Explore

Find Data Sets and Documentation: Download state and national data sets

Downloads



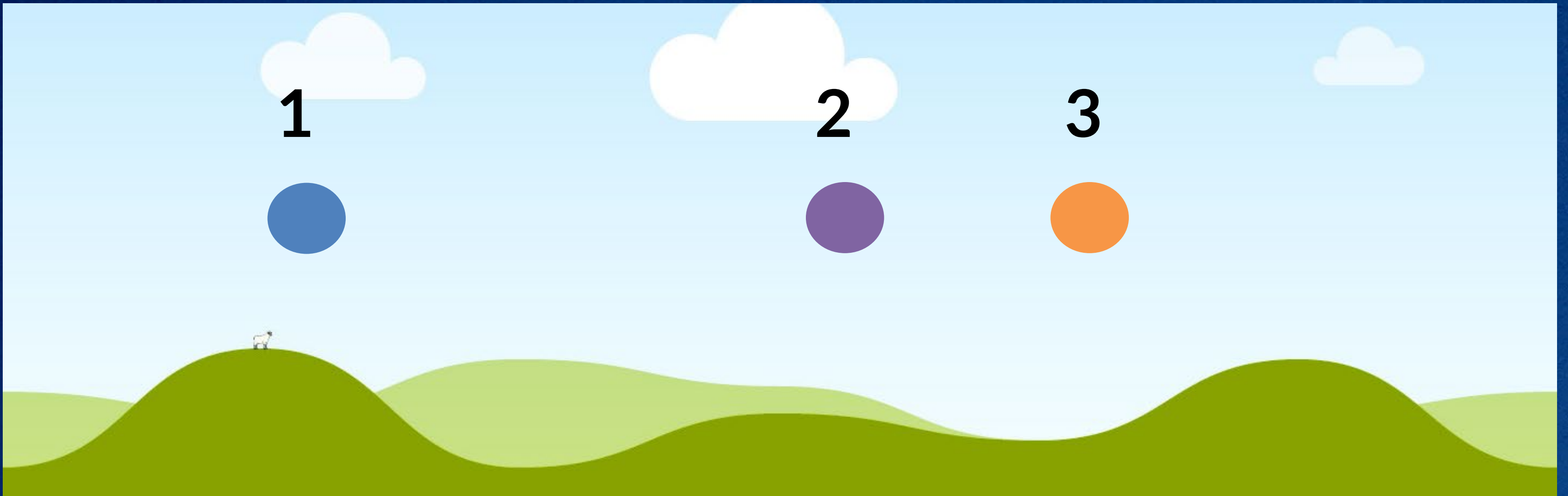
# About the data

- County-level measures from more than 20 national and state data sources
- Most recently available data
- Most data we use are public data available at no charge
- Reliable and valid measures



# About ranks

- Ranks are relative
- Ranks communicate order, not size of differences
- Ranks don't always capture progress





# Why Do Ranks Change?

**A county experienced health gains or losses**

**Other counties experienced health gains or losses:** A county's rank may also improve or worsen due to changes in other counties ranked just above or below.

**Random variation in measures:** All measures experience some variation year-to-year and a change may be caused by random variation in the measures that comprise the rank.



# Data Underlying the Ranks

## Health Outcomes

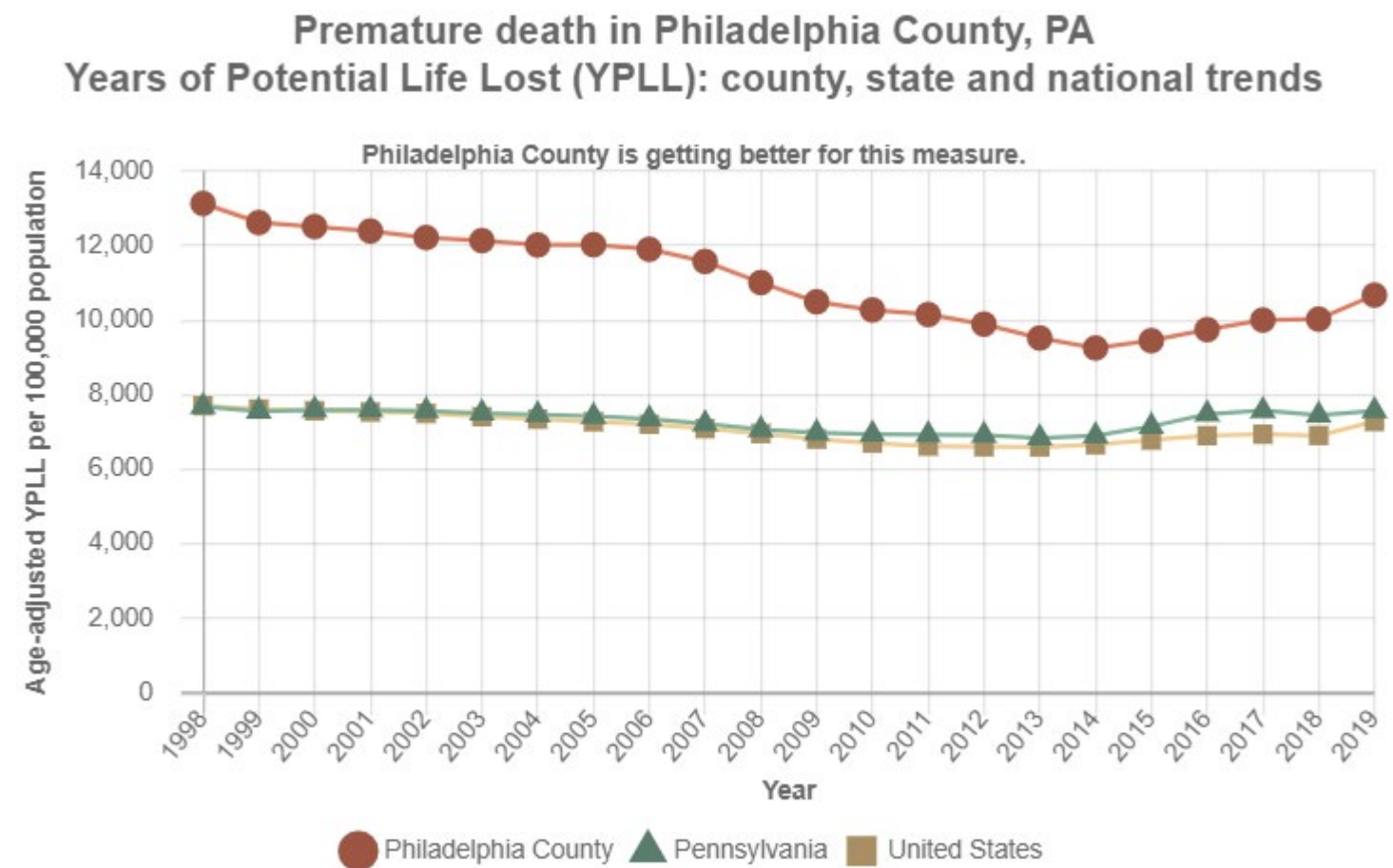
50%: Premature death

20%: Low birthweight

10%: Poor or fair health

10%: Poor physical health days

10%: Poor mental health days





# New measures for 2023 Rankings

## ➔ **Census Participation**

Influences the distribution of power through government representation, allocation of resources, and public health planning.

## ➔ **Voter Turnout**

Communities that vote more tend to be healthier, and healthier communities vote more.

*Census Participation and Voter Turnout added as unranked, additional measures*



## County Health Rankings & Roadmaps

Building a Culture of Health, County by County

HEALTH AFFAIRS FOREFRONT

RELATED TOPICS:

SOCIAL DETERMINANTS OF HEALTH | ACCESS TO CARE | COSTS AND SPENDING | SYSTEMS OF CARE

### Meeting Individual Social Needs Falls Short Of Addressing Social Determinants Of Health

[Brian C. Castrucci](#), [John Auerbach](#)

JANUARY 16, 2019

10.1377/forefront.20190115.234942

#### DETERMINANTS OF HEALTH

By Jeanette Renaud, Sean R. McClellan, Kelli DePriest, Katharine Witgert, Shannon O'Connor, Kate Abowd Johnson, Natalia Barolin, Laura M. Gottlieb, Emilia H. De Marchis, Lucia Rojas-Smith, and Susan G. Haber

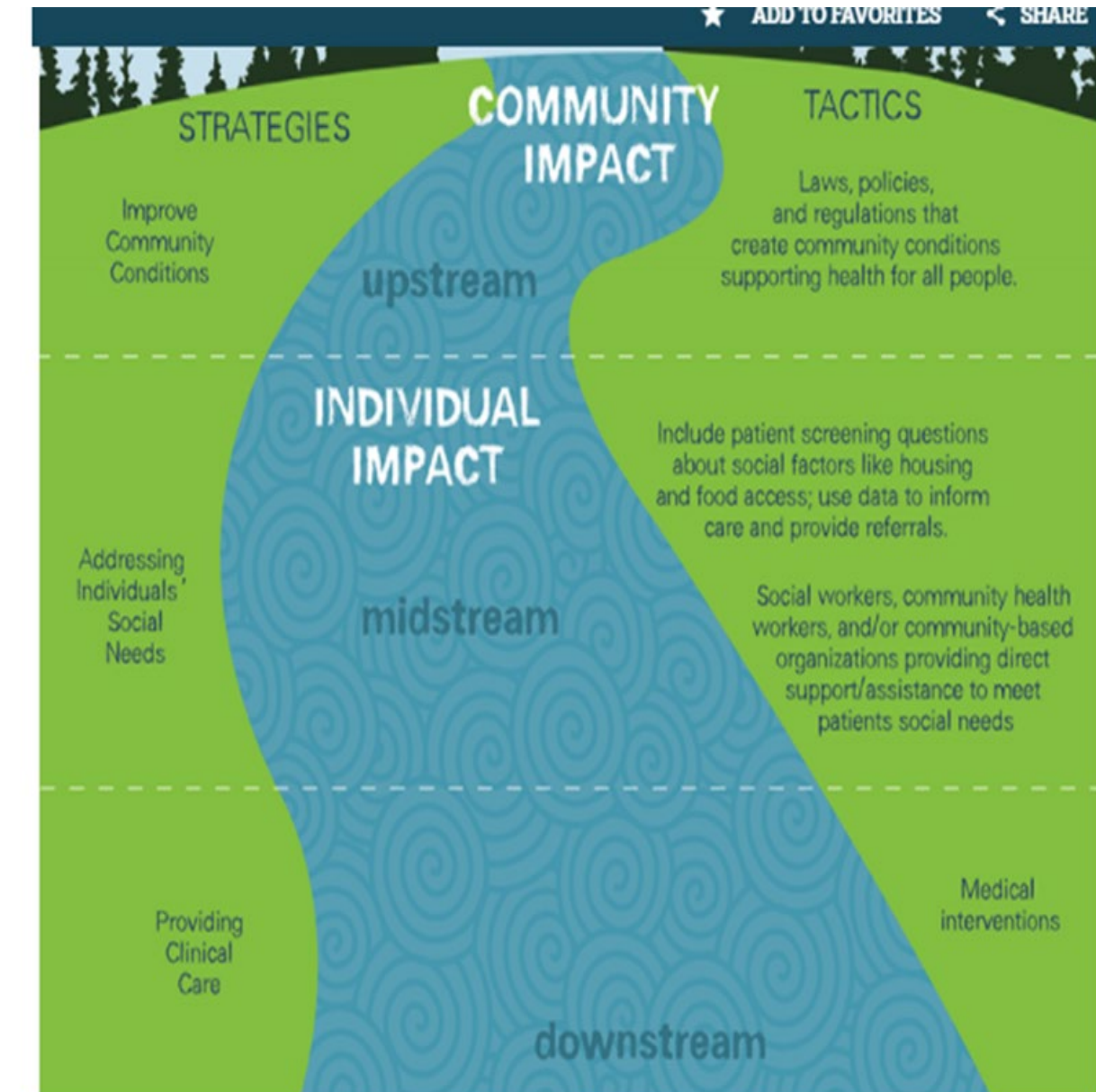
## Addressing Health-Related Social Needs Via Community Resources: Lessons From Accountable Health Communities

#### DETERMINANTS OF HEALTH

By William Parish, Heather Beil, Fang He, Noah D'Arcangelo, Melissa Romaine, Lucia Rojas-Smith, and Susan G. Haber

## Health Care Impacts Of Resource Navigation For Health-Related Social Needs In The Accountable Health Communities Model

DOI: 10.1377/hlthaff.2022.01507  
HEALTH AFFAIRS 42,  
NO. 6 (2023): –  
©2023 Project HOPE—  
The People-to-People Health  
Foundation, Inc.





## What Works for Health

Evidence matters. Our What Works for Health tool will help you find policies and programs that are a good fit for your community's priorities.

### Find Strategies by Topic

#### Health Behaviors

-  [Alcohol and Drug Use](#)
-  [Diet and Exercise](#)
-  [Sexual Activity](#)
-  [Tobacco Use](#)



#### Clinical Care

-  [Access to Care](#)
-  [Quality of Care](#)

#### Social & Economic Factors

-  [Community Safety](#)
-  [Education](#)
-  [Employment](#)
-  [Family and Social Support](#)
-  [Income](#)

#### Physical Environment

-  [Air and Water Quality](#)
-  [Housing and Transit](#)



# What Works?



## **Save and Share WWFH Strategies**

Now you can create a custom list of  
What Works for Health policies and

- Paid Family Leave
- Earned Income Tax Credits
- Child-Care Subsidies
- Flexible Work Scheduling



RESEARCH ARTICLE | DETERMINANTS OF HEALTH

[HEALTH AFFAIRS](#) > [VOL. 42, NO. 1](#): MEDICAID EXPANSION, BEHAVIORAL HEALTH & MORE

## Effects Of The 2021 Expanded Child Tax Credit On Adults' Mental Health: A Quasi-Experimental Study

[Akansha Batra](#), [Kaitlyn Jackson](#), and [Rita Hamad](#)

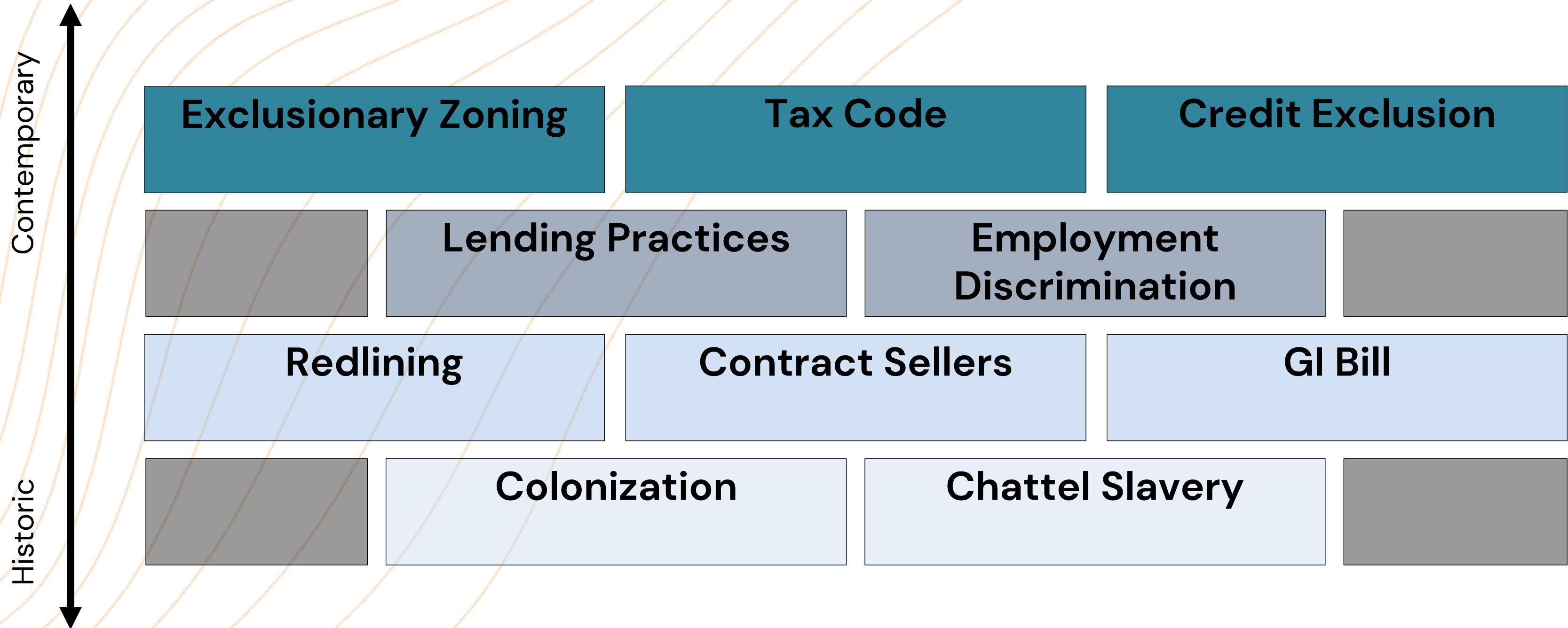
[AFFILIATIONS](#) ✓

PUBLISHED: JANUARY 2023  **Free Access**

<https://doi.org/10.1377/hlthaff.2022.00733>



# Drivers of Racial Wealth Inequity





# What Works for Health Curated Strategy Lists

What Works for Health Curated Strategy Lists are helpful resources to support community change efforts around specific topics and themes. Selected by our expert

## Explore Curated Strategy Lists



### NEW! Racial Wealth Building

Evidence-informed strategies to close the [racial wealth divide](#). These solutions account for historical practices that established and maintain the wealth divide – and reduce wealth inequities by increasing income and assets, expanding employment opportunities, removing barriers to quality education, and increasing access to homeownership.

[See the list >](#)



### COVID-19 Recovery

Evidence-informed strategies that help communities respond to and recover from COVID-19. These solutions address underlying issues like income, education and housing that resulted in COVID-19's inequitable impact.

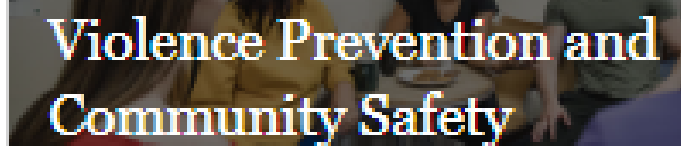
[See the list >](#)



### Climate Change

Evidence-informed strategies that help communities reduce greenhouse gas emissions and mitigate the effects of climate change, including options for [individuals to reduce their carbon footprint](#). These solutions address issues like transportation, energy efficiency, sustainable food options, stewardship and waste reduction.

[See the list >](#)



### Violence Prevention and Community Safety

Evidence-informed strategies to prevent neighborhood crime and violence as well as intimate partner violence. These solutions address collaborative efforts between law enforcement and community residents, and connect families and youth at risk with social services and supports.

[See the list >](#)



# Consider Narrative

Narratives are collections of deeply rooted stories in our collective consciousness that transmit values and ideas about how the world works.

**Toxic Narrative:** Your gain is my loss – we live in a zero-sum game society

**Transformative Narrative:** In our community, we take care of each other. Our well-being is bound to each other, and we refuse to leave anyone behind.



# Contextualize Data with Stories

1. Stories spark curiosity and create empathy
2. Stories show how solutions can be implemented
3. Stories can shift focus from individuals to systems and structures

County Health  
Rankings & Roadmaps

Building a Culture of Health, County by County



# Summary Points

1. Health is determined by multiple factors; clinical care is part of the solution.
2. Recognizing and rectifying past and contemporary injustice is key to advancing health equity.
3. Solutions exist and can be implemented.
4. Physicians and healthcare systems can use their power and influence to advance transformational change.



# Stay Connected



[Facebook.com/CountyHealthRankings](https://www.facebook.com/CountyHealthRankings)



Follow [@CHRankings](https://twitter.com/CHRankings)



Sign up for our newsletter  
[CountyHealthRankings.org/subscribe](https://www.CountyHealthRankings.org/subscribe)



[LinkedIn.com/company/county-health-rankings-roadmaps](https://www.linkedin.com/company/county-health-rankings-roadmaps)